

# Morphology and Evolution of the LMC Planetary Nebulae

*R. A. Shaw, L. Stanghellini, M. Mutchler, J. C. Blades (ST ScI) and B. Balick (U. Washington)*

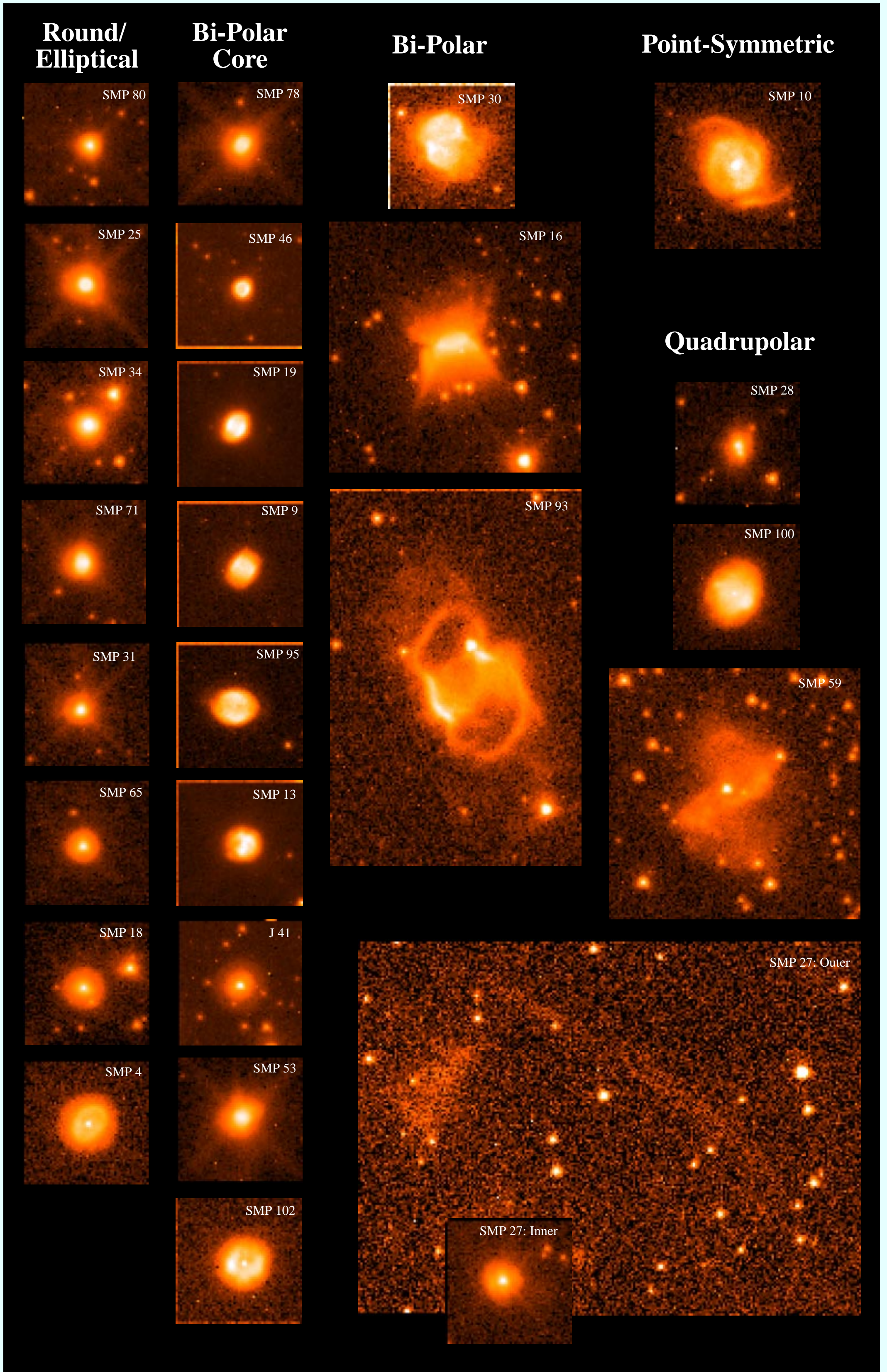


Figure 1: Broad-band, false-color images of each of the observed LMC planetary nebulae in Hubble Space Telescope GO program 8271, arranged by morphological type. All images are on the same spatial scale, with a square-root intensity stretch; the field of view in most images is 3 x 3 arcsec. The physical scale is  $\sim 0.245$  pc/arcsec.